



## 26" Open Frame Touchmonitor

# TM-2658

### Features

- Open Frame
- Slim profile with unique narrow border
- Multiple mounting options
- Open-frame VESA mounting option and removable wing bracket for VESA
- Detachable cables for easy cable harnessing
- Single power supply for all optional devices
- Multilingual and detachable On Screen Display (OSD)
- Comb Serial and USB touch interface
- Super-sensitive, drift-free, precise touch with no overlay
- Long-lasting product cycle
- Worldwide agency approvals



# 26" Open Frame Touchmonitor

## TM-2658



Leadingtouch Open Frame LCD's touchmonitors are designed for easy integration into kiosk, gaming machine, industrial enclosure and other installations where compact, touch-integrated display are preferred.

TM-2658 integrate the Leadingtouch's IP65 level Infrared touchscreen, TM-2658 series is Dustproof and Waterproof touchmonitors.

TM-2658 are designed for space saving and easy mounting integrations. The Open Frame configuration along with optional size mounting brackets would enable you to easily customize into kiosks, cabinets, in-wall as well as other enclosures.

TM-2658 will have Leadingtouch Combo interface with dual touch ports for convenience and flexibility. It will enable you to use both the Serial RS-232 as well as USB port for your touch application.

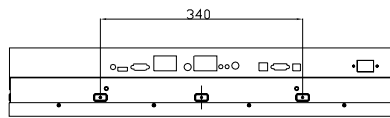
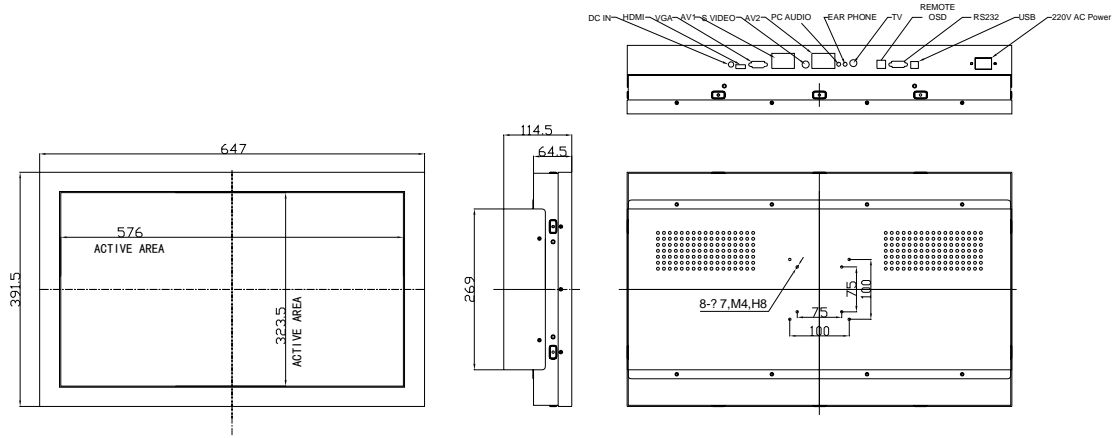
### Specifications

Model	TM-2658
Description	26" TFT Open frame Touchmonitor
Case/Bezel Color	Black
Display	16:9 Ratio 26"Active matrix TFT LCD
Optimal(native) resolution	1366X768@60Hz
Synchronization Range	Horizontal:135 kHz; Vertical: 120Hz
Useful screen area	Horizontal: 22.67" (576 mm);Vertical: 12.74" (323.5 mm)
Colors	16.7 million
Brightness	LCD panel: 500 cd/m2 (typical) With touchscreen: 480 cd/m2 (typical)
Pixel Pitch	0.511 x 0.511 mm
Response Time	4 msec (typical)
Contrast ratio	3000:1 typical
Viewing angle(typical, from center)	Horizontal (left/right): 170°(85°/ 85° ) Vertical (up/down): 150°(75° /75° )
Backlight Lamp life	50,000 Hrs to 1/2 brightness
Input video format	Analog (VGA), S-Video, YPbPr&YCbCr, HDMI
Input video signal connector	VESA DDC 1/28
On Screen Display(OSD)	Remote OSD with 1.2m cable
Touch Technology	Infrared
Touch Interface	Combo serial (RS232) and USB interface
Touch Resistive Time	15ms
Mounting Options	Rear Fixed, 200x100mm VESA mount; Table stand
Power supply	External:100-240V AC, 50-60 Hz
Power Consumption	150W Maximum
Temperature Range	Operating: 0°C to 50°C; Storage: -20°C to 60°C
Humidity Range	Operating: 10%-90%; Storage: 5%-90%, Non condensing
Touchmonitor Dimension	647x391.5 x 114.5(mm)
Warranty	Monitor: 3 years'; LCD Panel: 1 year
Agency Approvals	FCC, CE, RoHS compliant

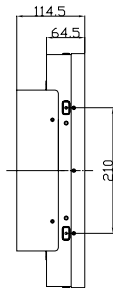


# 26" Open Frame Touchmonitor

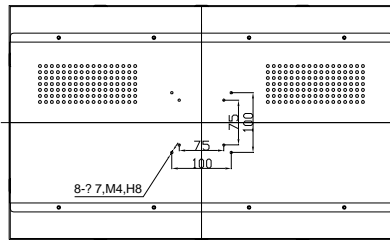
## TM-2658



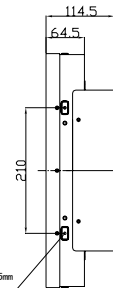
SIDE MOUNT, HORIZONTAL



SIDE MOUNT, VERTICAL

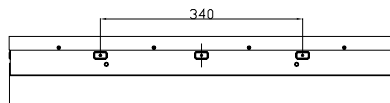


VESA



SIDE MOUNT, VERTICAL

M4 THREAD  
MAX. SCREW DEPTH=5mm  
10x



SIDE MOUNT, HORIZONTAL

# 26" Open Frame Touchmonitor

## TM-2658

Optional Accessory: Remote OSD Controller Box

