



19" Widescreen Rear Mount Touchmonitor

Model: TM-1969

Features

Rear Mount

Slim profile with unique narrow border

Multiple mounting options

Rear-mount VESA mounting option and removable wing bracket for VESA

Detachable cables for easy cable harnessing

Single power supply for all optional devices

Multilingual and detachable On Screen Display (OSD)

Comb Serial and USB touch interface

Super-sensitive, drift-free, precise touch with no overlay

Long-lasting product cycle

Worldwide agency approvals



19" Widescreen Rear Mount Touchmonitor

TM-1969



Leadingtouch Rear Mount LCD's touchmonitors are designed for easy integration into kiosk, gaming machine, industrial enclosure and other installations where compact, touch-integrated display are preferred. TM-196 series integrate the Leadingtouch's IP65 level SAW, Resistive, Capacitive or Infrared touchscreen, TM-196 series is Dustproof and Waterproof touchmonitors.

TM-196 series are designed for space saving and easy mounting integrations. The rear-mount configuration along with optional side mounting brackets would enable you to easily customize into kiosks, cabinets, in-wall as well as other enclosures.

TM-196 series will have Leadingtouch Combo controller with dual touch ports for convenience and flexibility. It will enable you to use both the Serial RS-232 as well as USB port for your touchscreen application.

Product Information

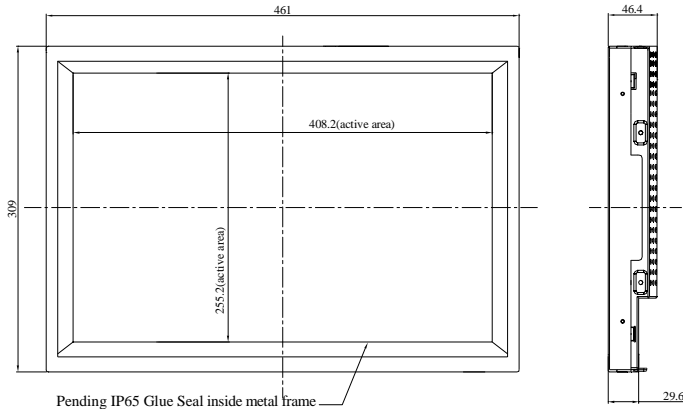
P/N	Touch Technology
TM-1969	SAW touchscreen
TM-1967	Capacitive touchscreen
TM-1964	4 Wire Resistive touchscreen
TM-1965	5 Wire Resistive touchscreen

Specifications

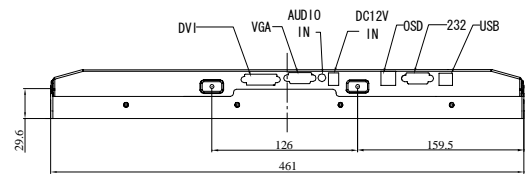
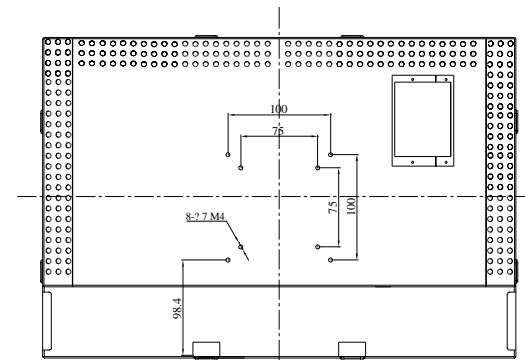
Model	TM-1969
Description	19" Widescreen TFT Rear Mount Touchmonitor
Case/Bezel Color	Black
Display	16:9 Ratio Active matrix TFT LCD
Optimal(native) resolution	1440x3(RGB) x 900 @60Hz
Synchronization Range	Horizontal:50 kHz; Vertical: 60Hz
Useful screen area	Horizontal:16.07"(408.2mm):Vertical: 10.05" (255.2
Colors	16.7 million
Brightness	LCD panel: 300 cd/m2 (typical) With SAW or Infrared touchscreen: 280 cd/m2
Pixel Pitch	0.297 x 0.297 mm
Response Time	5 msec (typical)
Contrast ratio	800:1 typical
Viewing angle(typical, from center)	Horizontal (left/right): 160°(80° /80°) Vertical (up/down): 160°(80° /80°)
Backlight Lamp life	50,000 Hrs to 1/2 brightness
Input video format	VGA or DVI optional
Input video signal connector	Mini D-Sub 15-Pin VGA type
On Screen Display(OSD)	Remote OSD with 1.2m cable
Touch Technology	SAW(Resistive, Capacitive Optional)
Touch Interface	Combo 10ms232 and USB interface
Touch Resistive Time	10ms
Mounting Options	Rear Fixed, 75 mm & 100mm VESA mount
Power supply	External:100-240V AC. 50-60 Hz
Power Consumption	45.5W max
Temperature Range	Operating: 0°C to 50°C; Storage: -20°C to 60°C
Humidity Range	Operating: 5%-90%; Storage: 8%-90%
Touchmonitor Dimension	461 x 309 x 46.4(mm)
Shipping Carton Dimension	515x 450 x 175(mm)
Weight(approx.)	Monitor: 6.5ka / shipping: 21ka
Warranty	Monitor: 3 years; LCD Panel: 1 year
Agency Approvals	FCC, CE, RoHS compliant

19" Widescreen Rear Mount Touchmonitor

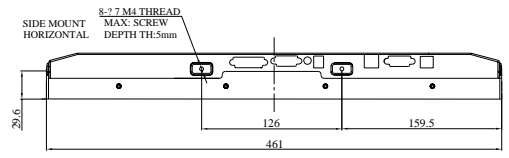
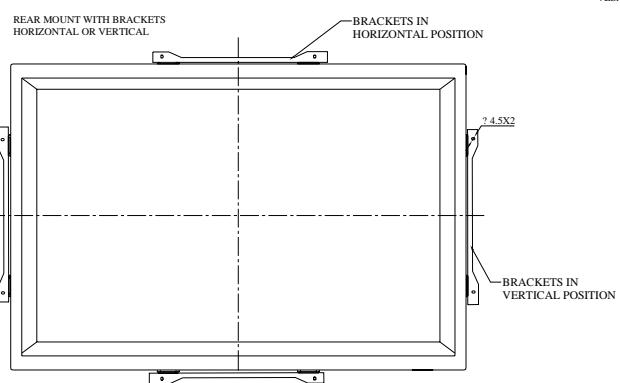
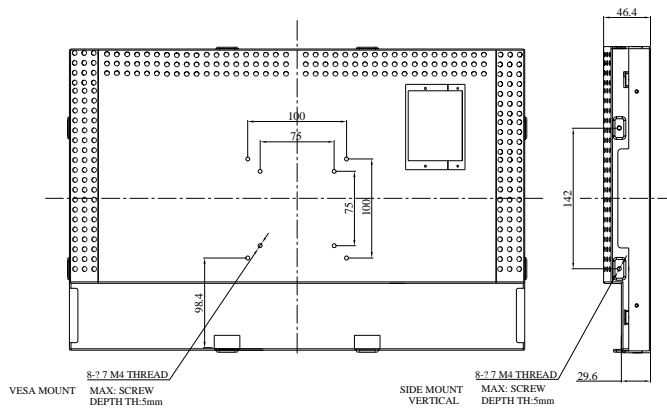
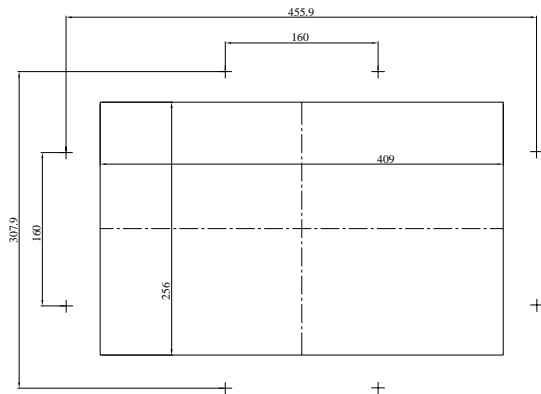
TM-1969



Pending IP65 Glue Seal inside metal frame



RECOMMEND CUSTOMER PANEL CUT-OUT



19" Widescreen Rear Mount Touchmonitor

TM-1969

Optional Accessory: Remote OSD Controller Box

