

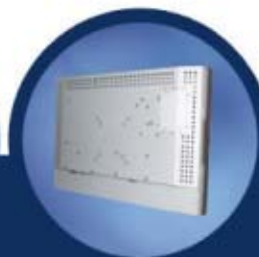


19" Widescreen Infrared Rear Mount Touchmonitor

Model: TM-1968

Features

- Rear Mount
- Slim profile with unique narrow border
- Multiple mounting options
- Rear-mount VESA mounting option and removable wing bracket for VESA
- Detachable cables for easy cable harnessing
- Single power supply for all optional devices
- Multilingual and detachable On Screen Display (OSD)
- Comb Serial and USB touch interface
- Super-sensitive, drift-free, precise touch with no overlay
- Long-lasting product cycle
- Worldwide agency approvals



19" Widescreen Infrared Rear Mount Touchmonitor

Model: TM-1968



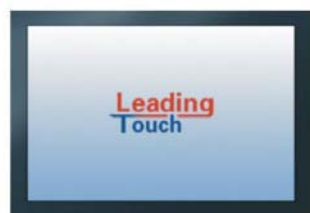
Leadingtouch Rear Mount LCD's touchmonitors are designed for easy integration into kiosk, gaming machine, industrial enclosure and other installations where compact, touch-integrated display are preferred. TM-1968 is Dustproof and Waterproof touchmonitor. Anti-Vandalism touchscreen is available for special application

TM-1968 is designed for space saving and easy mounting integration. The rear-mount configuration along with optional side mounting brackets would enable you to easily customize into kiosks, cabinets, in-wall as well as other enclosures.

TM-1968 will have Leadingtouch Combo controller with dual touch ports for convenience and flexibility. It will enable you to use both the Serial RS-232 as well as USB port for your touch application.

Product Information

P/N	Touch Technology
TM-1968	Infrared touchscreen

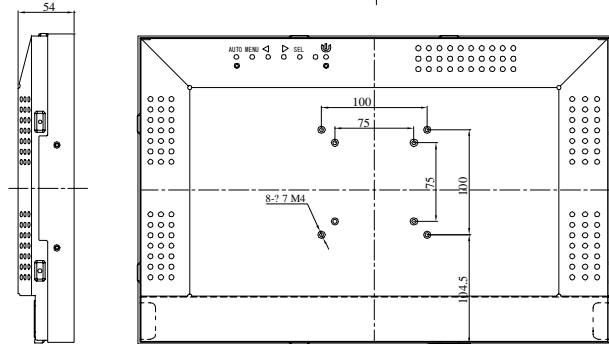
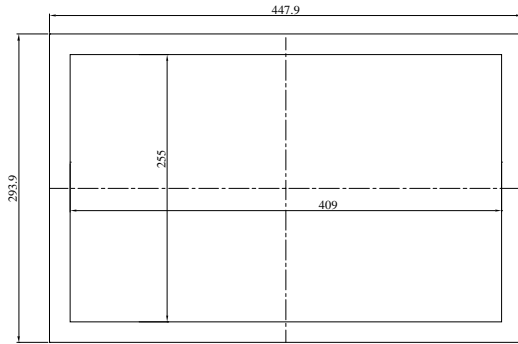


Specifications

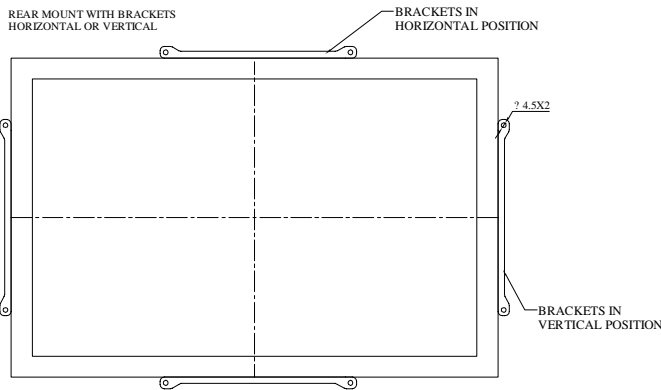
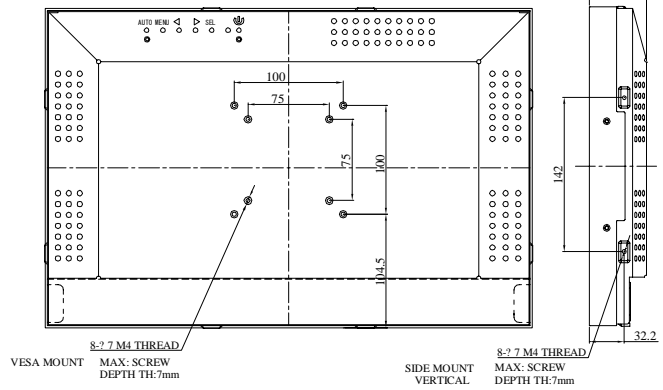
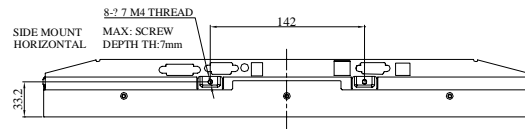
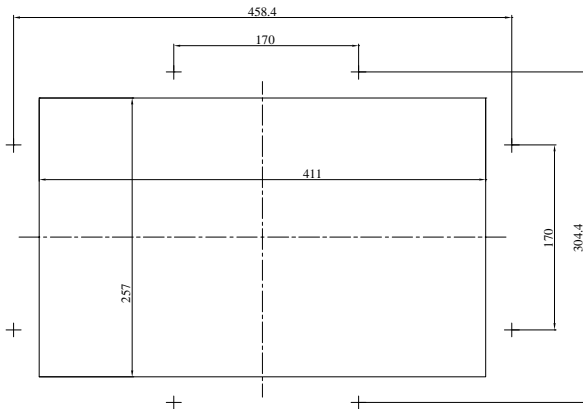
Model	TM-1968
Description	19" Widescreen TFT Rear Mount Touchmonitor
Case/Bezel Color	Black
Display	16:9 Ratio Active matrix TFT LCD
Optimal(native) resolution	1440x3(RGB) x 900 @60Hz
Synchronization Range	Horizontal:50 kHz: Vertical: 60Hz
Useful screen area	Horizontal:16.1"(409mm):Vertical: 10.05" (255 mm)
Colors	16.7 million
Brightness	LCD panel: 300 cd/m2 (typical) With Infrared touchscreen: 280 cd/m2 (typical)
Pixel Pitch	0.297 x 0.297 mm
Response Time	5 msec (typical)
Contrast ratio	800:1 typical
Viewing angle	Horizontal (left/right): 160°(80° /80°) Vertical (up/down): 160°(80° /80°)
Backlight Lamp life	50,000 Hrs to 1/2 brightness
Input video format	VGA or DVI optional
Input video signal connector	Mini D-Sub 15-Pin VGA type
On Screen Display(OSD)	Remote OSD with 1.2m cable
Touch Technology	Infrared
Touch Interface	Combo 10ms232 and USB interface
Touch Resistive Time	10ms
Mounting Options	Rear Fixed, 75 mm & 100mm VESA mount
Power supply	External:100-240V AC, 50-60 Hz
Power Consumption	45.5W max
Temperature Range	Operating: 0°C to 50°C: Storage: -20°C to 60°C
Humidity Range	Operating: 5%-90%: Storage: 8%-90%
Touchmonitor Dimension	447.9 x293.9 x 46.4(mm)
Shipping Carton Dimension	515x 450 x 175(mm)
Weight(approx.)	Monitor: 6.5kg / shipping: 21kg
Warranty	Monitor: 3 years'; LCD Panel: 1 year
Agency Approvals	FCC, CE, RoHS compliant

19" Widescreen Infrared Rear Mount Touchmonitor

Model: TM-1968



RECOMMEND CUSTOMER PANEL CUT-OUT



19" Widescreen Infrared Rear Mount Touchmonitor

Model: TM-1968

Optional Accessory: Remote OSD Controller Box

