

Infrared Touch Screen User Manual

Version 1.01

Copyright ©2009-2010

by

Leadingtouch Technology Co., Ltd

HuiLongGuan LongXiang industrial center, ChangPing, Beijing, China

Tel: +86-51090978 <http://www.leadingtouch.com>

Fax: +86-51090979 E-mail: info@leadingtouch.com

PREFACE

Thank you for choosing our Infrared touch screen products!

This guide is the hardware installation manual of Leadingtouch Infrared touch screens.

We hope it will help you to make better use of our touch screens.

CONTENTS

PREFACE	2
CONTENTS.....	2
Components of touch screen.....	3
Components	3
Accessories:	3
Tools:	3
Hardware Installation.....	3
Before Inastallation.....	3
Install touch screen in LCD monitor.....	4
Connecting Touchscreen Devices	6
Installing Driver.....	6
Start installation	6
Introduction to driver setup and function.....	8
Uninstall Leadingtouch drivers.....	15
FAQ.....	15

Components of touch screen

According to the installation, there are the components and the accessories of Leadingtouch touchscreen.

Components:

- ✓ Touch screen
- ✓ Cables

Accessories:

- ✓ Double-side adhesive foam tapes
- ✓ Dust-proof strips

Tools:

- ✓ Cross screwdriver, Flat screwdriver
- ✓ Diagonal cutting pliers, Sharp-nose pliers
- ✓ Knife, Scissors, etc.

Hardware Installation

Before Inastallation

Before your installation, please set the touch screen horizontally and test to confirm it's in good function.

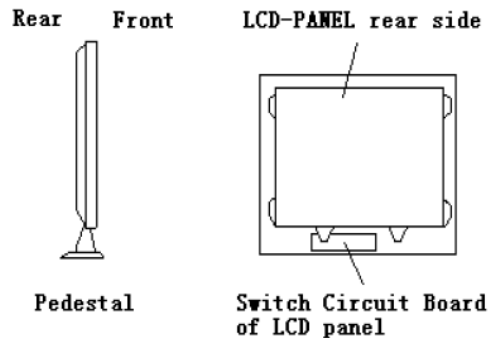
Cautions:

- For touch screen assembly inside monitor:
 - ✓ Make sure the front frame of monitor not overlay the surface of filter aside active area.
 - ✓ Front frame of monitor should not press on touch screen too tightly to cause deformation and defection.
 - ✓ If fix the touch screen by screws aside touch screen, make sure the distance between screws equal and suitable not to cause deformation and defection.
- For touch screen assembly outside monitor:
 - ✓ Make sure the touch screen overlay surface is flat.
 - ✓ For size under 22" touch screen can be fixed by adhesives, size above 22" should add extra fix components. Install touch screen in CRT monitor

Install touch screen in LCD monitor

Disassemble LCD monitor

Before you install touch screen in your LCD monitor, you have to disassemble monitor. Open the front and rear cover of the monitor by turning the screws on the rear cover, the switch circuit board and the LCD panel. The positions of the parts of the monitor are showed as below drawing.

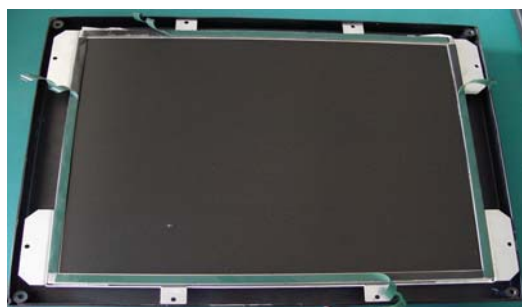


Commonly, some reinforces are made inside the front cover, If they hinder the touch screen from putting in or damage the connecting wires on the side of the touch screen. You should cut them away with pliers. (After cutting, be sure to make the cut smooth by abrading, because the sharp cut may damage the connecting wires on the side of the touch screen. If the space permits, the cut can be bonded with adhesive foam tape.)

Stick the dust-proof strips around LCD panel



Tear off the outer layers of dust-proof strips for about 3 or 4mm



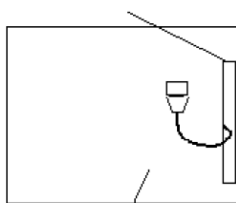
Thoroughly clean the two surfaces of the touch screen as well as the display area with the glass detergent. After cleaning, collimate and tear off all dust-proof strips outer layers to stick the touch screen onto the display carefully



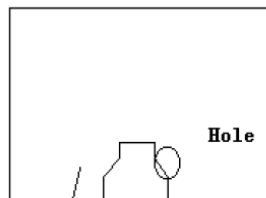
Clear cable

Signal cable need to put through rear cover, you have to find a suitable hole or cut a hole on the rear cover with cant plier.

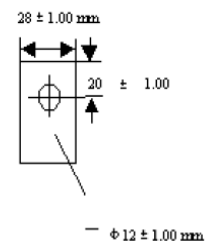
LCD-PANEL reinforcement



LCD-PANEL (Rear)



The back of the monitor's back cover



Reassembly your LCD monitor



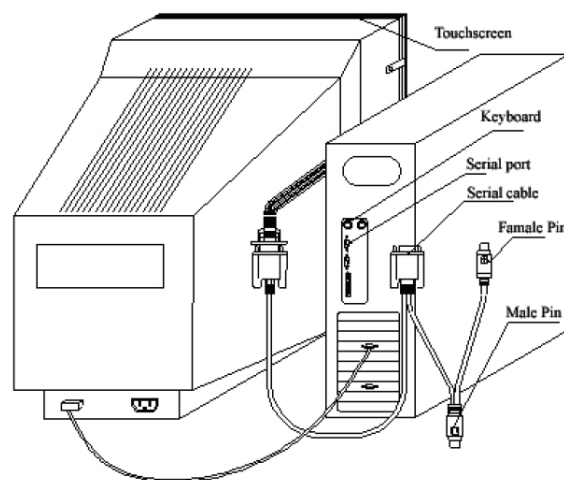
Remarks:

Because the touch screen and the double-side adhesive foam tape are added between the display and the front cover, Some rubber washers should be added when installing the LCD, and then put the LCD into the front cover.

Connecting Touchscreen Devices

Serial cable connecting

- 1 · Connect DB9 female connector to COM port of PC.
- 2 · Connect ADB male connector to ps2 port of PC.
- 3 · Connect ADB female connector to keyboard.
- 4 · Connect DB9 male to DB9 female of touch screen outlet cable.



USB cable connecting

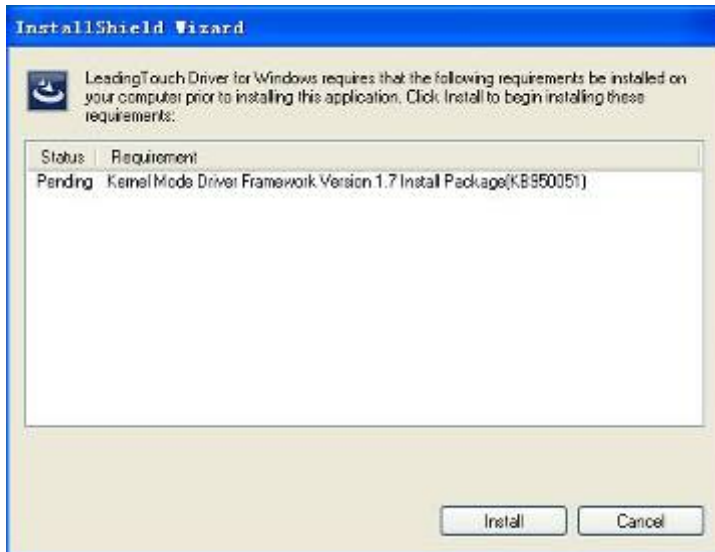
Connect USB port of touchscreen and USB port of PC with USB cable.

Installing Driver

Start installation

Double click setup.exe file to start installation.

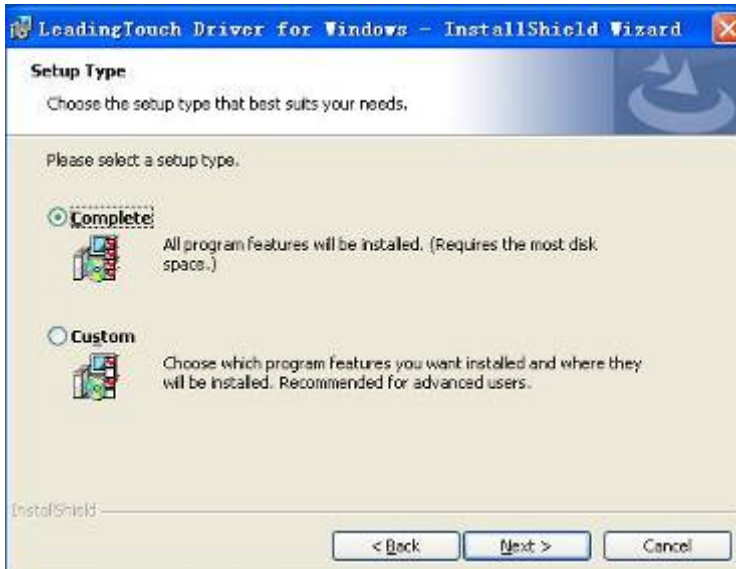
Firstly install resource kit for driver



Choose a installation path, the default path is C:\Program files\Leadingtouch.



There are two setup type: complete and Custom. The default one is complete type.

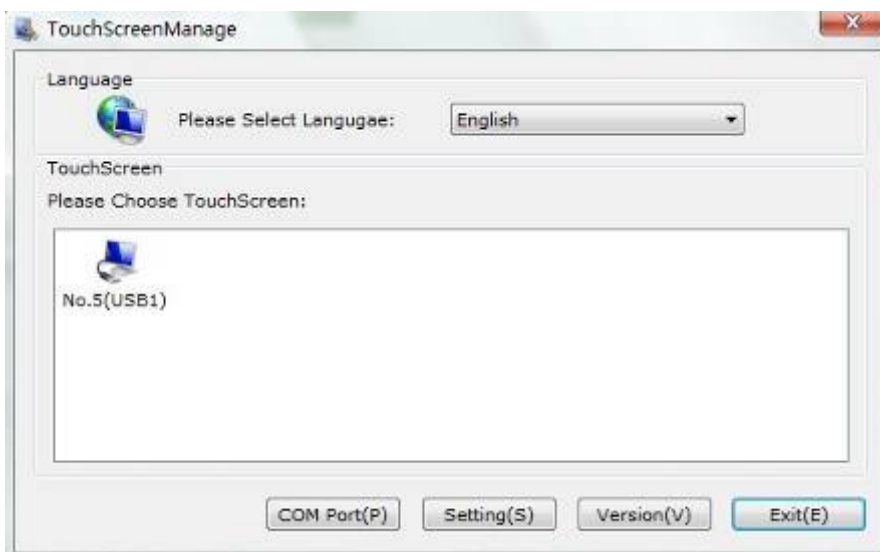


After installation, double click LeadingTouchSetup on desktop to enter calibration program.



Introduction to driver setup and function

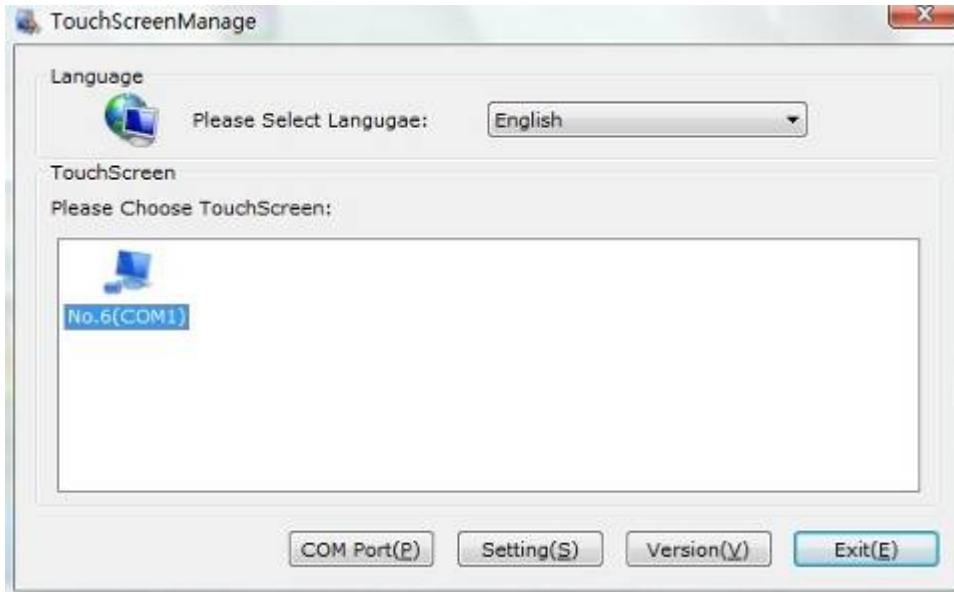
Touchscreen administration interface



Language: can choose interface language, now has two choice Chinese and English language.

Touchscreen: All touchscreen can be recognized is shown in the box, choose the right one calibrate and click Setting(S) to continue your setting.

COM Port(P): For serial interface touchscreen, please select the right COM port for your touchscreen to continue setting(Note: COM interface touchscreen can't not be recognized autoly, user need to select COM port manually and click Add to add touchscreen into computer as following picture shows).



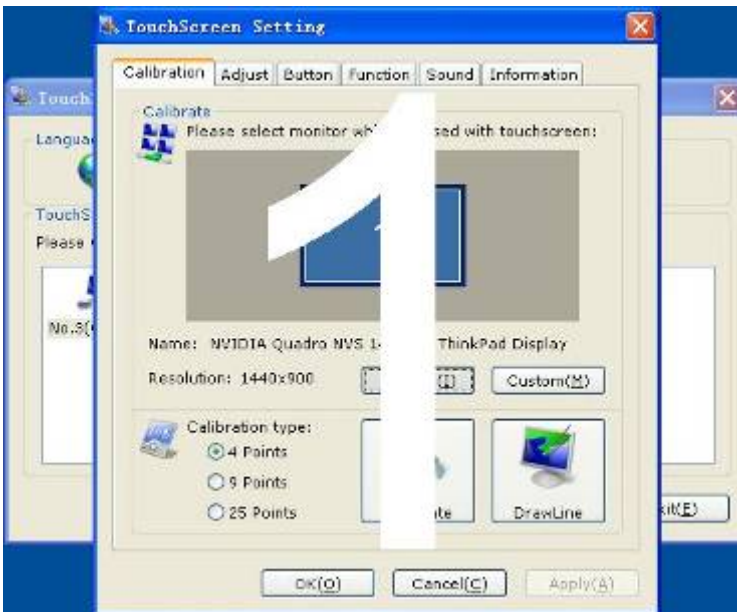
Driver version information



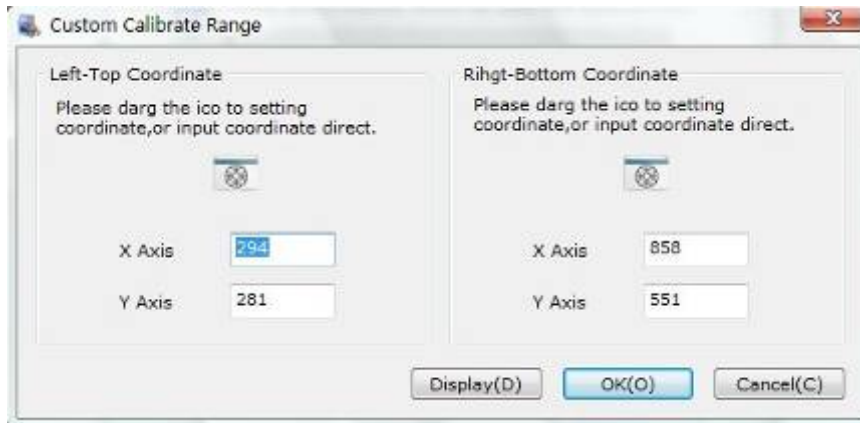
Touchscreen setting



Calibrate: show monitor and resolution information recognized by system
Identify: show monitor information to current touchscreen.



Custom: to define custom calibration area by changing drag Left-Top and Right-Bottom coordinate to set calibration area.



4 points calibration: calibrate by 4 points, for SAW and Infrared touchscreens.
9 points calibration: calibrate by 9 points, for 4W, 5W and capacitive touchscreen.
25 points calibration: calibrate by 25 points, for 4W, 5W and capacitive touchscreen.
Select 4 points, 9 points, 25 points or custom and click calibrate to start calibration.



Press the center of red point for about 2-3 seconds. Don't release your finger until the red point shaft to next position or hearing beep sound. Repeat for all red point to finish calibration.

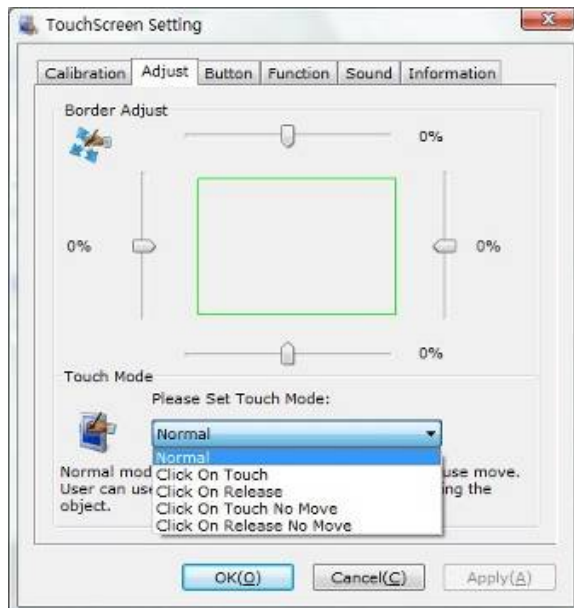


After calibration, you can choose:

Recalibrate: If mouse cursor can't overlap with your touch finger, please select this item to calibrate touchscreen again.

DrawLine: Select to enter draw-line test, for more details refer to next chapter

Touchscreen setting- Adjust



Border adjust: adjust screen border scale border to fit current touchscreen, as touchscreen may have abnormal action caused by installation or non-linear problem.

Touch mode:

Click On Touch: indicates the response when your finger touches on the panel

Click On Release: indicates the response when your finger leaves the touchs panel

Click On Touch No Move: indicates the response when your finger touches on the panel, can't draw line and drag

Click On Release No Move: indicates the response when your finger leaves the panel, can't draw line and drag

Touchscreen setting-Button



[Button Switch]: Enable Auto Right Button Switch

Auto range: Click effectual in 10mm area

Auto time: Click effectual in 1000mMsec

Auto right button effects only when above two items effectual.

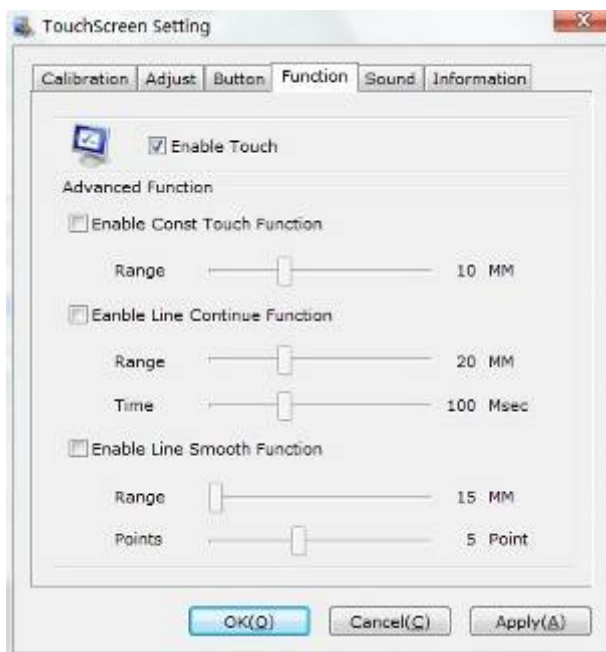
[Double Click Setting]:

Range: Clicks in range of 10 mm are determined to be a touch point

Time: Clicks in 500 msec are determined to be a touch point

If any icon or program can't open normally, please drag the two rules above to right side a little.

Touchscreen setting-Advanced



[Enable Touch]: Enable or disable touch function of touch panel

[Advanced Function]:

Enable Const Touch Function: The range of 10 mm are determined to be a touch point

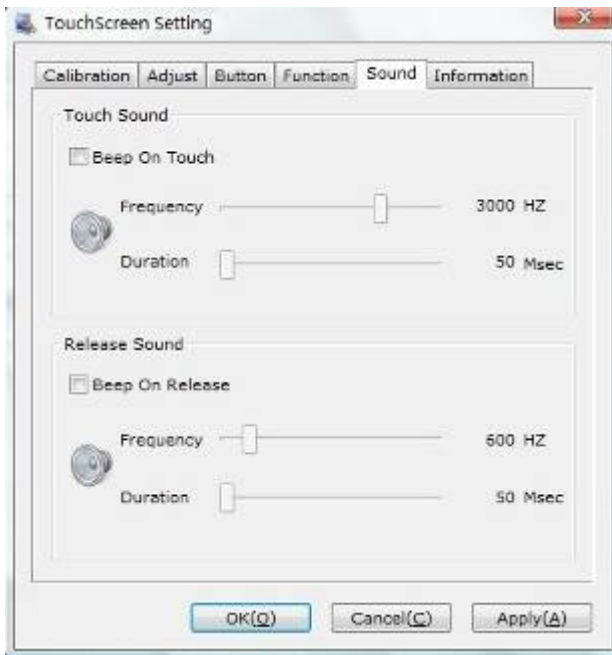
Enable Line Continue Function: Settings for handwriting input or drawing.

Range: Disconnected line in range of 20mm will be amended by algorithm

Time: Disconnected line in range of 100msec will be amended by algorithm

Enable Line Smooth Function: Line can be smoothed by algorithm to insert 5points in 15mm range

Touchscreen setting-Sound



Beep on touch the speaker on the computer will generate voice when touch on the touchscreen

Beep on release the speaker on the computer will generate voice when leave off the touchscreen

Touchscreen setting-Information



[Screen information]

Select: Click to select current touch panel size and model to amending function if mouse cursor not overlap with your finger after calibration. Default size is from 3.5inch to 42 inch

Custom: Click to input a custom touch panel size

[Control Card information]
Indicate Control Card information

Uninstall Leadingtouch drivers

Enter Touchscreen Uninstall program through the following programmer
1 Click “Start”----“programmer”----“Leadingtouch” ----“Uninstall”



2 Open control panel and select “Leadingtouch Driver for Window” ----“delete”



3. Run setup program and select “uninstall”.

FAQ

Q: Touch no response.

Please follow below steps to find out the cause :

1. If driver is installed
2. If touch screen is broken during transportation
3. If computer serial port is applicable
4. If touch screen and computer is in good connection
5. If the power supply for touch screen and host is normal
6. If touched the right side of touch screen
7. If driver is installed correctly

8. If protection film is tear off

Solution:

1. Install driver
2. Change a good touch screen
3. Check if serial port connection and driver serial port setting is right
4. Plug all cables in right way.
5. Change a good power supply or host for testing.
6. Set the touch screen right positioned.
7. Download the latest driver program from our website or contact us by phone or email.
8. Tear off the protection film.

Q: Touch screen is not sensitive and most area has no response

This abnormal always caused by outside interference. Follow below steps to find out the cause

1. Check if there is strong light on touch screen
2. Check if there is protection film overlay on touch screen
3. Check if power supply is normal
4. Check if LED on touch screen in broken

Solution:

1. Take touch screen to where light is weaker
2. Tear off protection film
3. Change another host for testing
4. Change LED or touch screen

Q: About 1 or 2cm area near the border has no response

This abnormal always caused by abnormal calibration. Follow below steps to find out the cause:

1. If driver is the latest version
2. If touched the right point shown by flicker cursor to during calibration

Solution:

1. Install right driver
2. Redo calibration test